



Access Gate



Dunkermotoren provides solutions for the implementation of EN 17352

By publishing the EN 17352, it has been defined standards for requirements and test methods for power-operated access control devices for the very first time. This includes i.e. turnstiles, swing lanes and retractable lanes. Thus, manufacturers of such products are obliged to take into account further safety requirements when designing new solutions.

Dunkermotoren can contribute to these requirements with different approaches:

Low-energy mode compatible:

Dunkermotoren's product portfolio is based on a proven modular concept. This enables the configuration of a drive whose low inertia can help to ensure the critical kinetic energy not to exceed, which relieves the overall system. Dunkermotoren can assist in the calculation of the kinetic energy. Safely switched torque-off if critical speed is exceeded.

Fire alarm:

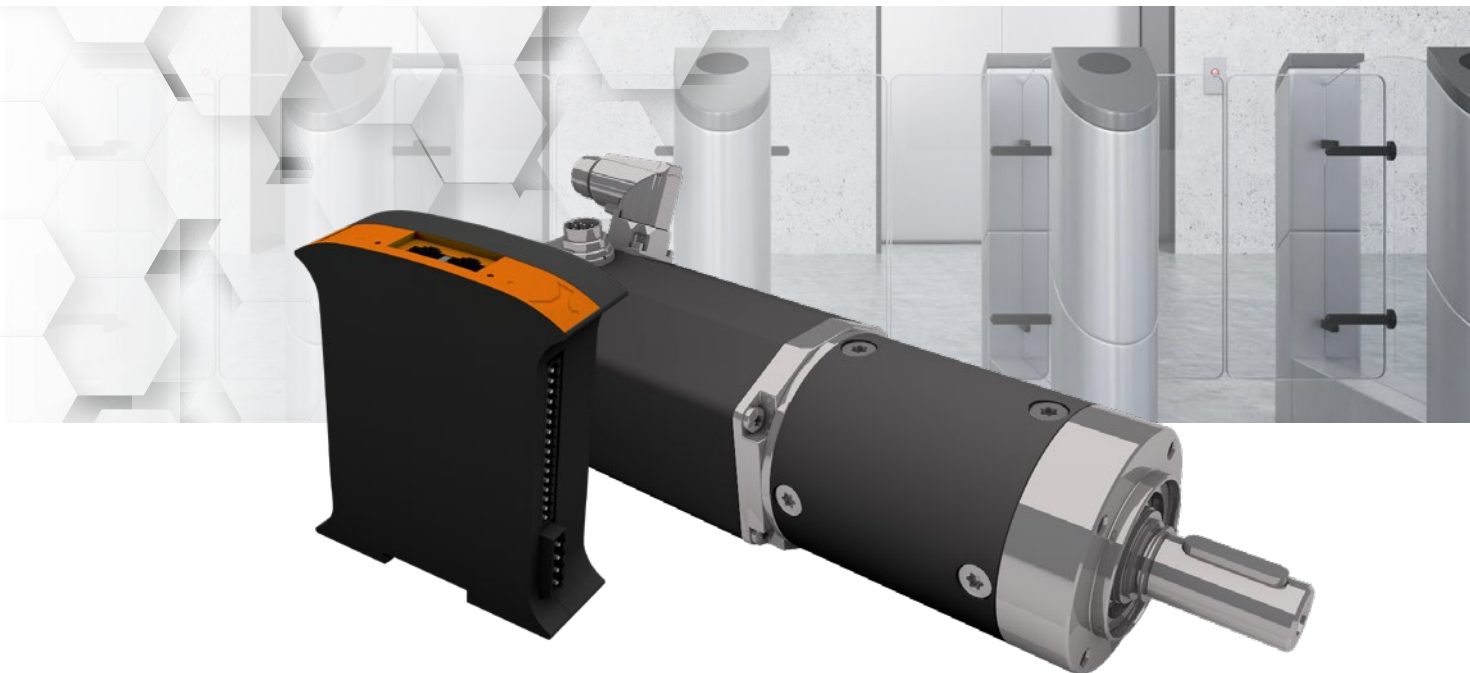
When using appropriate control electronics from Dunkermotoren, the drive can be set torque-free via appropriate functional safety.

Break-out function: Reversible gearboxes allow manual opening for escape and rescue routes.

Limitation of forces:

In addition to gearbox and motor solutions, Dunkermotoren also offers integrated or external control electronics certified in according to EN ISO 13849-1 for Performance Level d (PL d) / Category 3. The control electronics are able to safely switch off torque.

- » Force limitation compatible, full hit-detection coming soon
- » Hit-detection, shutdown when impact detected
- » Safe torque shutdown certified according to EN13849-1



” Safety parameters according to DIN EN ISO 13849-1

Safety parameters according to DIN EN ISO 13849-1/ Safety Parameter gemäß DIN EN ISO 13849-1	
Performance level/ Performance Level	PL d
Category/ Kategorie	Cat. 3
Diagnostic coverage/ Diagnosedeckungsgrad	DC _{avg} : low/ niedrig (89,4 %)
Mean time to dangerous failure (per channel)/ Mittlere Zeit bis zu einem gefährbringenden Ausfall	MTTF _D : 100 years/ Jahre (high)

” Fullfilled standards

Fulfilled standards/ Erfüllte Normen	
DIN EN ISO 13849-1: 2016-06	Safety of machinery – Safety-related parts of control systems - Part 1: General principles for design/ Sicherheit von Maschinen – Sicherheitsbezogene Teile von Steuerungen - Teil 1: Allgemeine Gestaltungsgrundsätze