

# SEGMENTS – MOTIVE

## AEROSPACE

- Seat adjustment
- Folding and expanding of monitors
- Adjustment of various covers
- Opening and closing of interior doors

## LIGHT RAIL VEHICLE

- Hydraulic brake systems
- Opening and closing of interior and exterior doors

## TRAIN STATION

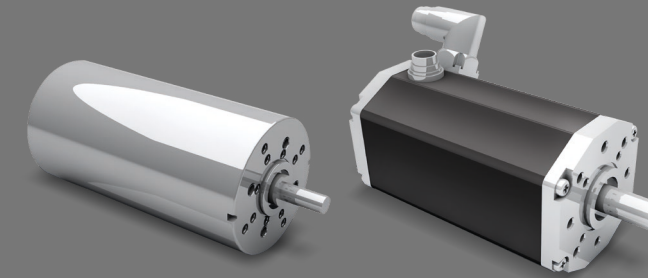
- Platform Screen Doors (PSD)
- Access systems (turnstile)
- Sliding doors

## MUNICIPAL VEHICLE

- Motor at disc brushes for municipal vehicles
- Replacement of hydraulic cylinders by electric cylinders
- Various pump drives

## BUS

- Swinging and sliding doors
- Interior and exterior swing doors
- Bus ramps
- Heating systems



## OUR VALUE PROPOSITION FOR YOU:

- High life expectancy and cycle numbers
- Protection classes up to IP69K
- Models for extreme temperature ranges
- Vibration and shock proof according to railway standard EN 61373
- EMC and ESD solutions fitting customer needs
- Innovative, energy-efficient DC-concepts (IE 5)

CANopen EtherCAT<sup>®</sup> **PROFI** NET

## TRAIN

- Sanding systems
- Windscreen wipers
- Footsteps
- Opening and closing of interior and exterior doors
- Pantographs
- Locking units

## AUTOMOTIVE

- Heating systems
- Spoiler adjustment
- Safety belt adjustment

## SHIPPING

- AdBlue pumps
- Ship doors
- Heating systems
- Hatch adjustment

